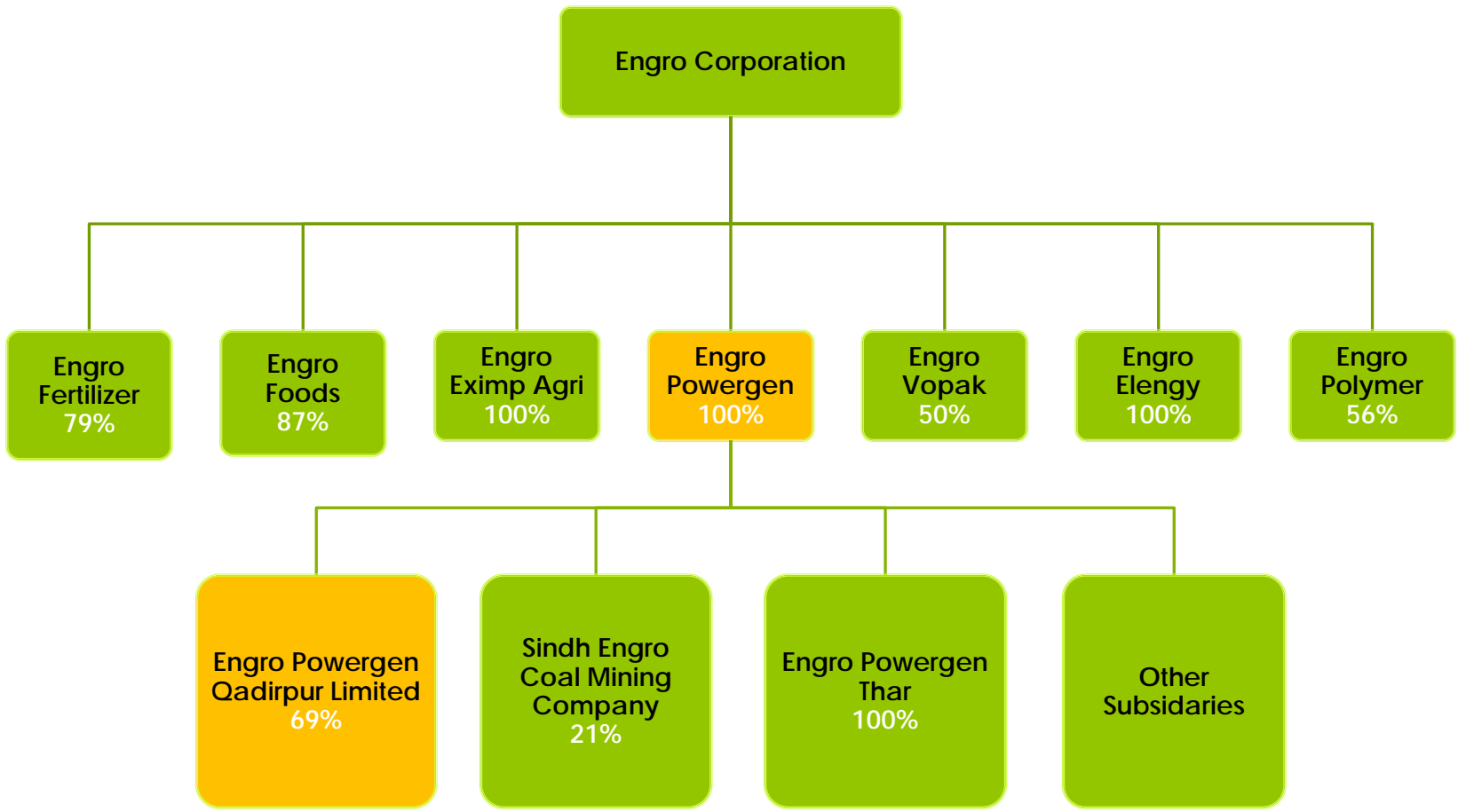


Engro Powergen Qadirpur Limited
Analyst Briefing Q3, 2015
October 19, 2015



Engro Portfolio



Key Highlights for YTD 2015

EPQL achieved **PAT of PKR 1,398 M** for 9M 2015 vs PKR 1,553 M in 9M 2014

EPQL approved **dividend of PKR 1.00 per share** on August 7, 2015. **YTD dividend payout of PKR 2.50 per share.**

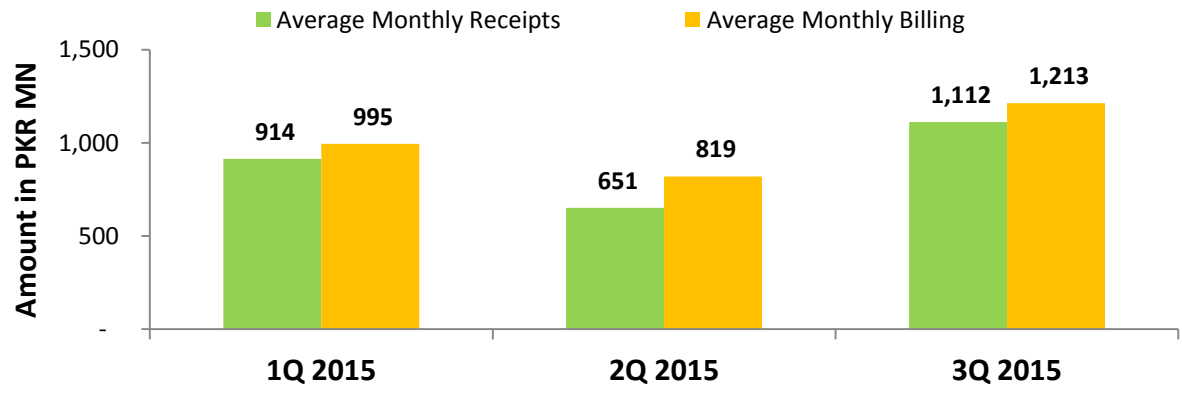
Plant demonstrated a **Billable Capacity Factor of 99.6%** in 9M 2015 vs 100% for the same period last year

CPP receivables **touched zero** on September 30, 2015

Annual Capacity Test successfully conducted in August 2015

Entire amount of **GIDC arrears for prior years settled with WAPDA** and subsequently entire GIDC payables (prior years) settled with SNGPL

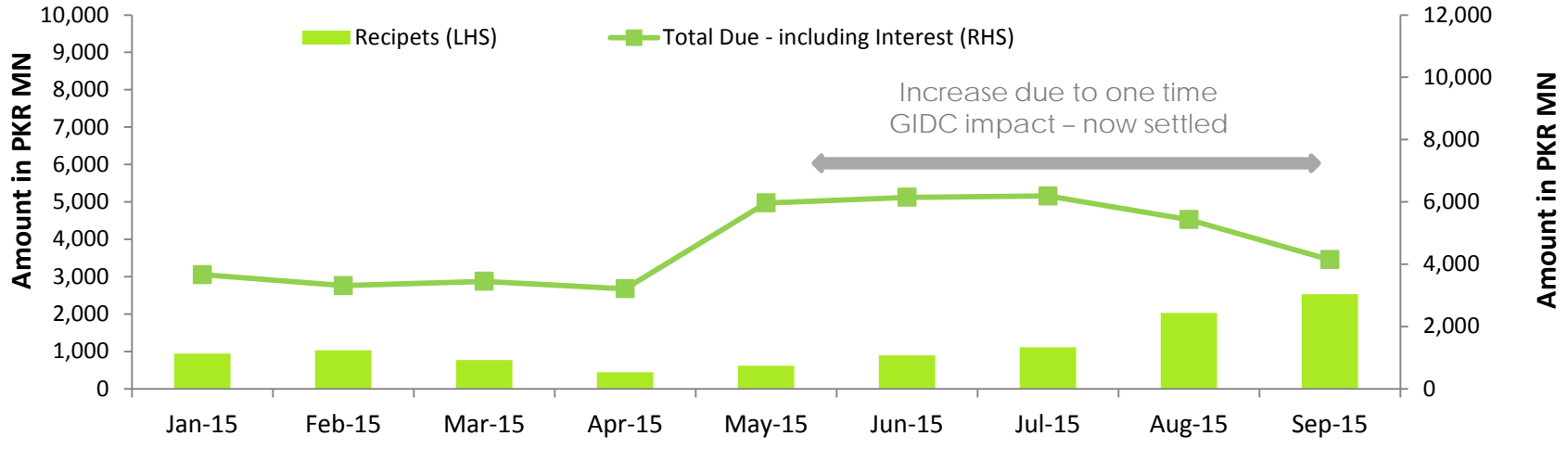
EPQL - Billing & Receipts*



*Exclusive of GIDC amounts

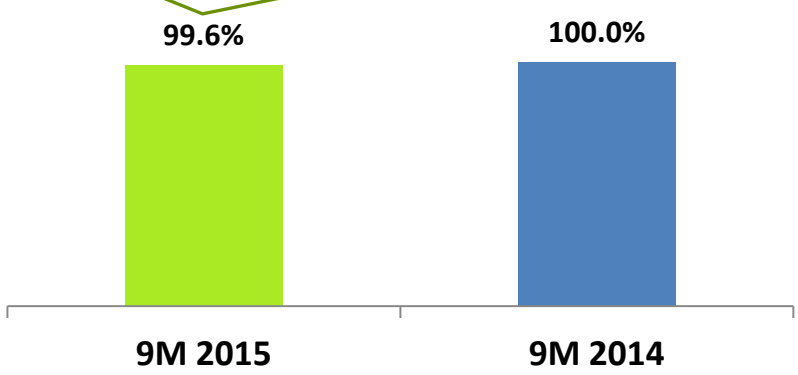
PEPCO Receivable at end September 2015 is PKR 4.1 Bn vs PKR 3.2 Bn at year end 2014

PEPCO Receivables



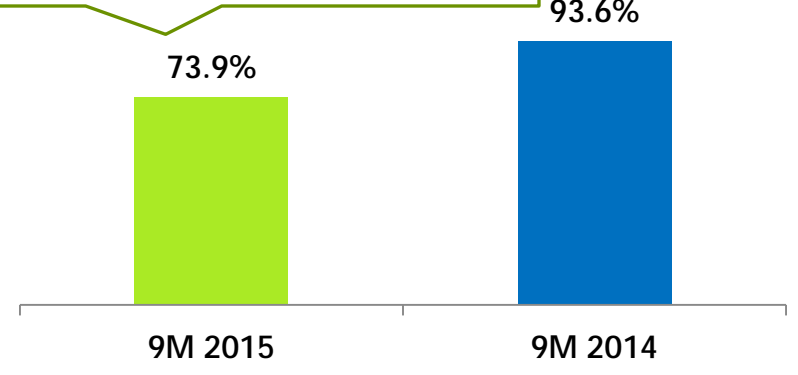
Billable Availability Factor

Frequent ramping up activity due to WAPDA grid issues in Q1 2015



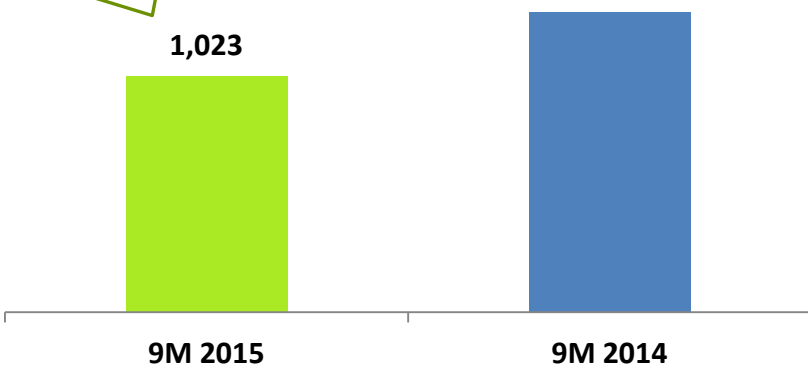
Load Factor

Lower due to MI activity, WAPDA grid issues & SNGPL compressor tripping



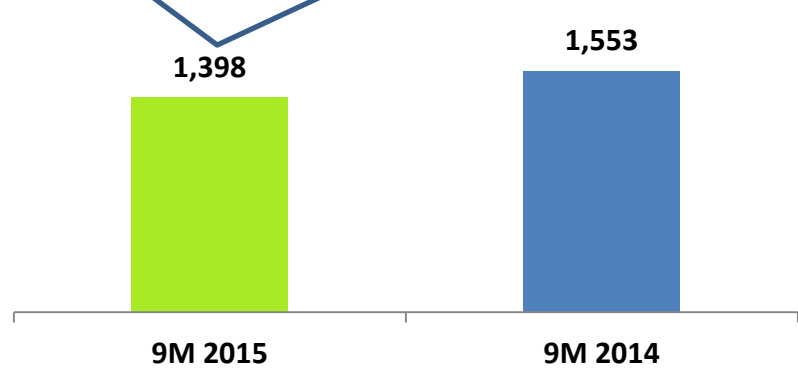
Net Electrical Output (GW)

MI activity, WAPDA grid issues & SNGPL compressor tripping's



PAT (PKR M)

Lower due to lower NEO (higher SO/FO/PFO), increase in MI related expenses/other fixed costs and one off insurance income in 2014





engro powergen qadirpur

